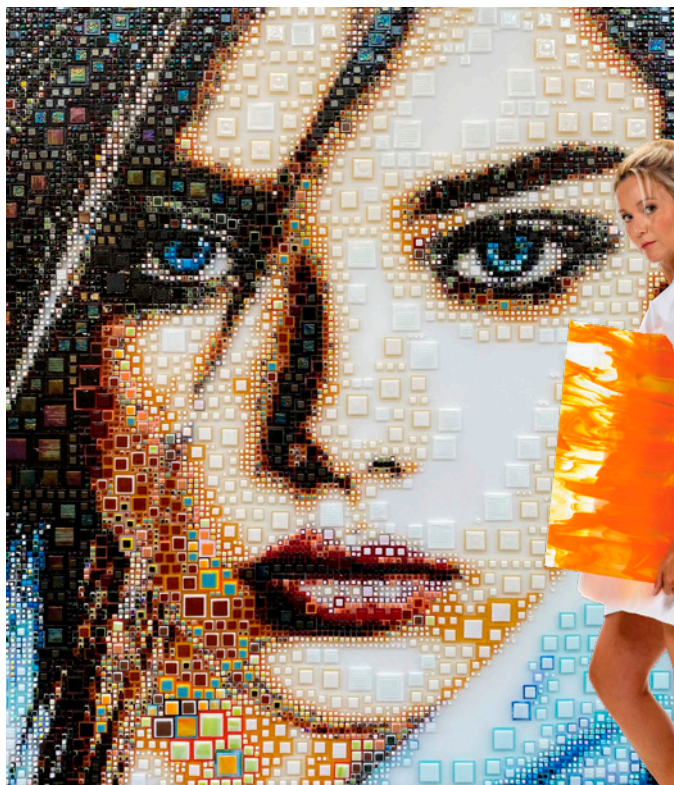




An innovative
Belgian
portrait artist.

GVD

Isabelle Scheltjens
BELGIUM 1981



Isabelle Scheltjens

BELGIUM 1981

As the wife of a stained-glass artist, Isabelle became fascinated by the beauty of stained glass, with all its variations and structures. As a beauty specialist and a graduate of the SISA, a school of decorative arts and crafts in Antwerp, she has a keen grasp of proportions and is able to transform the beauty and expression of a face into a strikingly characteristic portrait that can be viewed from multiple perspectives.

She has developed an exceptional technique, by creating her own, contemporary version of the mosaic, an artform that originated 2000 years before Christ. She makes cut glass squares in various colours, structures and sizes and then fuses them together in a kiln. Many colour combinations arise during this process, which she uses to construct the portrait.

Inspired by pointillism, she allows the fused glass pieces to merge optically to create a beautiful and intriguing portrait against a matt plastic background. While the work appears abstract from close up,

a detailed and highly dynamic portrait emerges when it is viewed from a distance.

Her supreme dedication to glass, colour and composition can be seen in her unique and impressive works. She primarily makes portraits of women and personalised portraits. The imposing scale of her colourful and powerful artworks make them even more impressive. Isabelle's work can now be seen across the globe from New York to Japan and from Dubai to London. She was also commissioned to produce portraits for various celebrities.

"Distance creates beauty."





Scan the QR-code

and download this brochure as
pdf file in  Dutch or  German.



WhatsApp

Scan the QR code for more
information or photos via WhatsApp.



GALLERY VAN DUN
CONTEMPORARY ART

GALLERYVANDUN.COM



 DUTCH GALLERY
ASSOCIATION

 ARTSY.NET

De Lind 52, Oisterwijk
The Netherlands

+31 (0)13 523 47 40
info@galleryvandun.com

Follow us on
facebook and *Instagram*